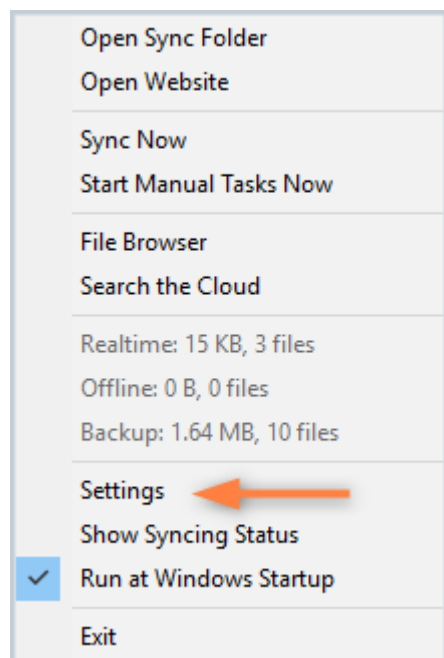


20.1 Selective Folder Sync

Limiting what gets Synced

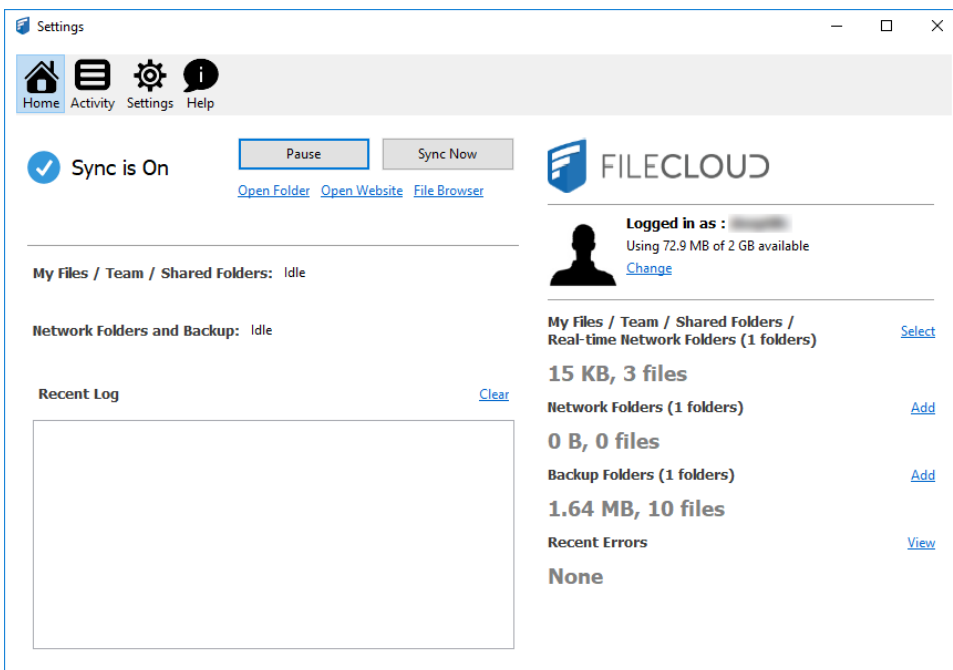
You can choose to limit what gets synced to a particular computer via the FileCloud sync app. This is useful when you have terabytes of data in an account and you only want a few gigabytes of folders locally to conserve space.

To limit folders that gets synced, click on Settings in the Sync Applications Menu,



Then either

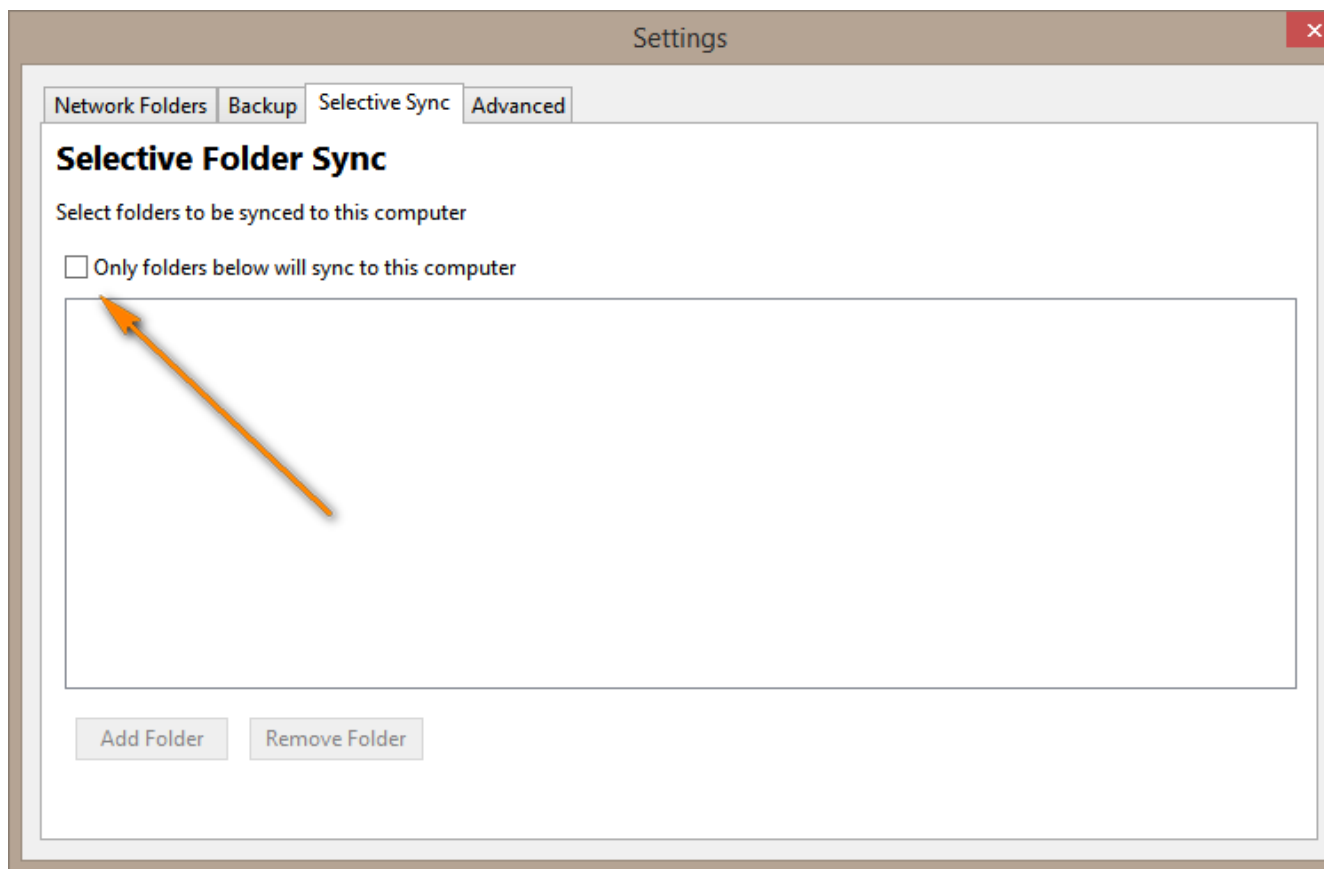
- Click on "Select" link to select what gets synced in "My Files / Team / Shared Folders".



- Click on Settings tab and select "Selective Sync" option

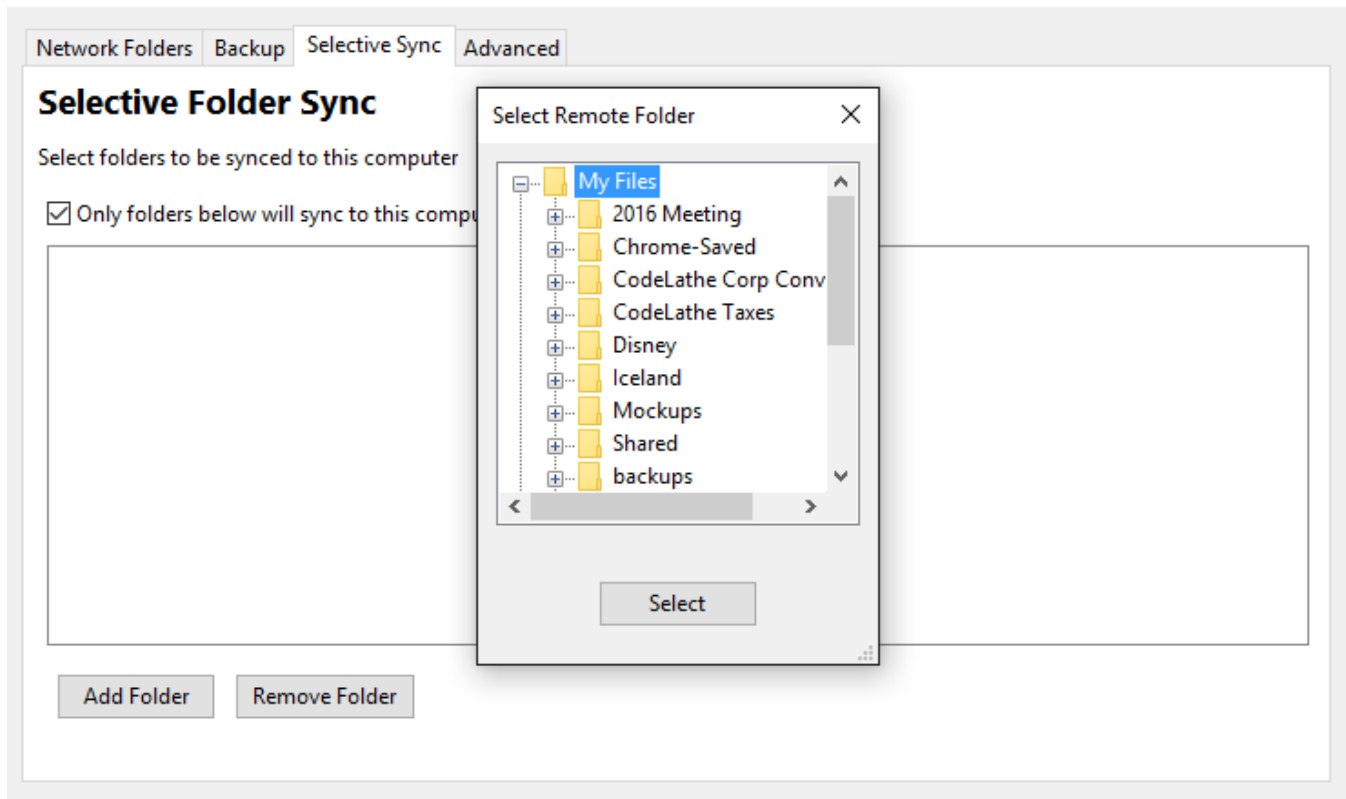
The screenshot shows the OneDrive Settings application window. The top navigation bar has four icons: Home, Activity, Settings (selected), and Help. Below the navigation bar, the 'Settings' title is displayed. The main content area is divided into several sections: 'Account Settings' with an 'Edit' button; 'Selective Sync' with a description 'Select only some folders to sync from My Files and Shared Folders' and an 'Edit' button (highlighted with an orange arrow); 'Network Folders' with a description 'Select Network Folders to sync locally' and an 'Edit' button; 'Backup' with a description 'Select Folders to Backup' and an 'Edit' button; and 'Other Settings' with a description 'Miscellaneous Settings' and three buttons: 'Edit', 'Change Sync Folder', and 'Reset Sync Data'.

- In the Selective Folder Sync Dialog, select the checkbox "Only folders below will sync to this computer" and then select the folders you want to sync.



Click on "Only folders below will sync to this computer".

Then click on "Add Folder" to select folders you want synced. You can click on "Remove Folder" to remove any folders that were previously selected.



Note that when you switch from syncing all files to only specific files, any existing files in your sync folder will not be removed automatically. You will have to remove them manually. This is to prevent accidental deletion of any user files.

Selective Sync Behavior when Centralized Configuration is set

When the Sync app behavior is controlled centrally by the administrator (through User Policy Device Configuration settings in the admin portal), users of Sync app shall not be allowed to add or remove Selective Sync folders.

When a user tries to make any changes, the following message will be displayed - "Centralized Configuration is being applied. Settings cannot be changed. Please contact your administrator for assistance."