



20.1 Limit Sync To a Schedule

 The ability to limit the time when Sync is active is available in FileCloud version 18.2 and later.

 You can set a schedule for the times when you want the Sync application to run.

HTTP Proxy Settings

Proxy Host

Proxy Port

Username

Password

Other Settings

☒ Enable Active Sync Hours Edit Settings

☐ Enable Bandwidth Rate Control Edit Settings

Sync Frequency (secs)

Allow Remote Management ☐

Enable DocIQ Office Integration ☒

Select Active Sync Hours

Please select the days

☐ Every day

☐ Every Sunday

☐ Every Monday

☐ Every Tuesday

☐ Every Wednesday

☐ Every Thursday

☐ Every Friday

☐ Every Saturday


Please select time of the day

From: To:

Save Changes

For example:


- If you are running the FileCloud Sync app on a busy network, you may want Sync to run at the least busiest times
- If you just want to save your changes to the FileCloud Server at the end of each day

 You can only set one time when Sync will run for every day you select. The default time is from 8:00:00 AM To 8:00:00 PM.

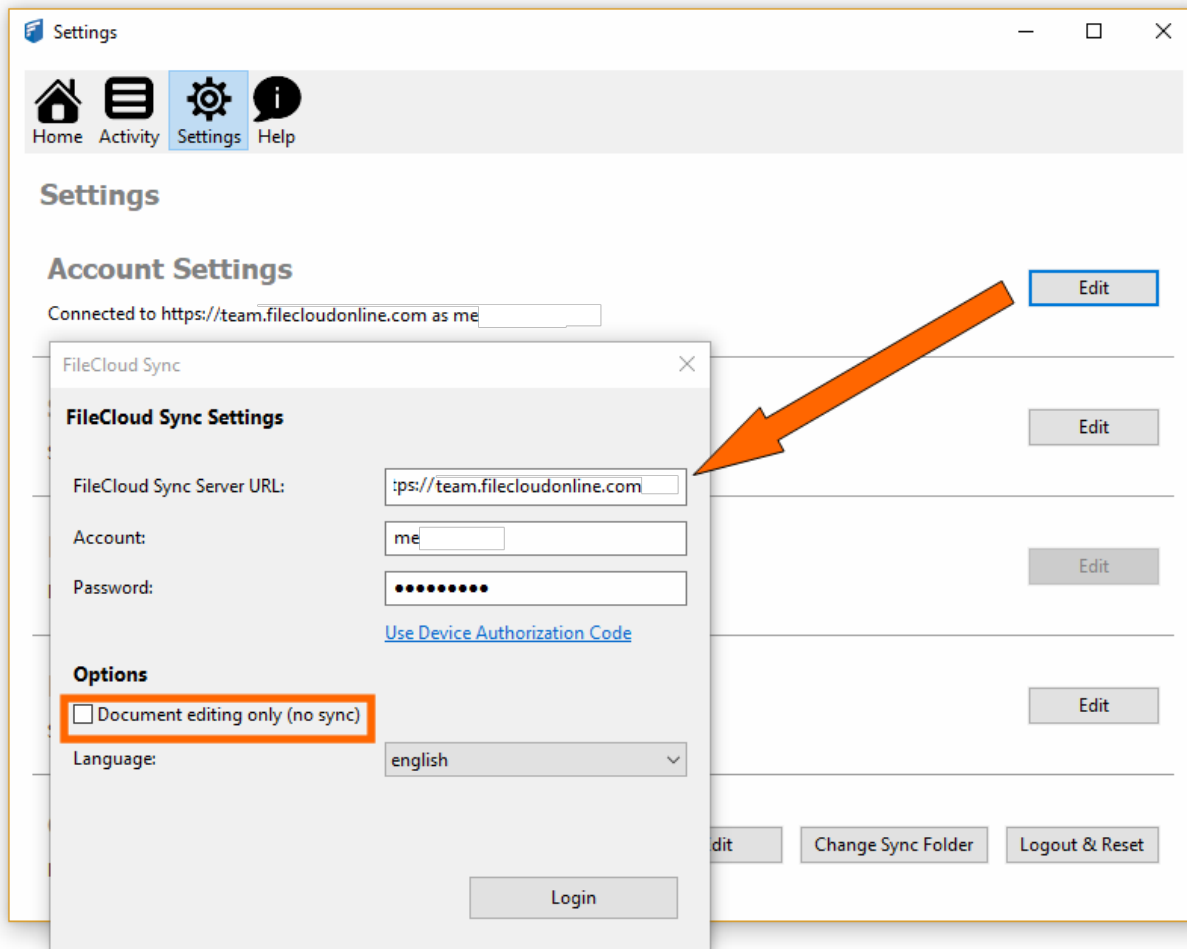
For example:

- If you choose Sunday and Tuesday for days of the week
- If you schedule the hours from 8:00:00 AM To 10:00:00 AM
- Then Sync will be active only on Sundays and Tuesdays and only during the hours between 8 AM and 10 AM. It will remain disabled on other days and times.

The settings you use impact the Sync application in the following ways:

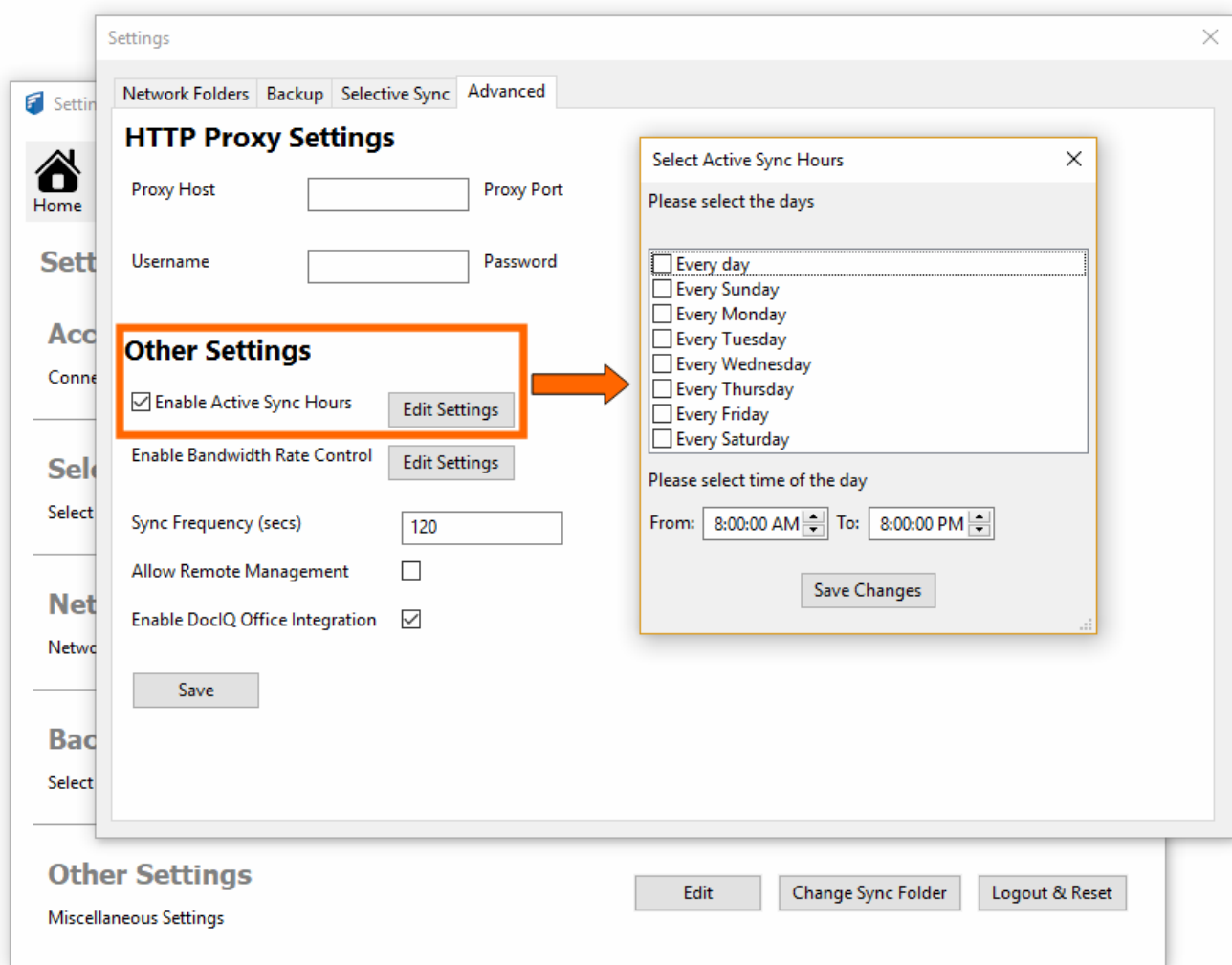
Setting	Value	Impact	Notes
Time Active Controls	enabled	Sync will be active ONLY during the schedule times <ul style="list-style-type: none">• At all other times Sync remains disabled, which means real-time syncing and offline folders syncing will be disabled.• The Start button on the Sync Settings screen is disabled• The Pause button on the Sync Settings screen is disabled <div> If you choose the Doc editing only mode, then you cannot set Time Active Controls</div>	To use the Start or Pause buttons again: <ul style="list-style-type: none">• Disable Time Active Controls
Time Active Controls	disabled	Sync will always be active The Start button on the Sync Settings screen can be used The Pause button on the Sync Settings screen can be used	If Time Active Controls are automatically disabled, you can enable them again by: <ul style="list-style-type: none">• Unselecting the Doc editing only mode checkbox• Starts Sync by clicking the "Start" button on Home screen
Doc editing only	enabled	This mode always takes precedence over Time Active Controls If you enable Time Active Controls and then choose the <i>Doc editing only</i> mode, Time Active Controls will be automatically disabled	To use Time Active Controls again: <ul style="list-style-type: none">• Unselect the Doc editing only mode checkbox

Doc editing only	disabled	Time Active Controls can be enabled	
------------------	----------	-------------------------------------	--



To set a bandwidth rate limit for Sync:

1. In the *System Tray*, right-click on the *FileCloud Sync icon*, and then select *Settings*.
2. On the *Settings* window, in the *Account Settings* section, click *Edit*.
3. Under *Options*, you will find the *Document editing only (no Sync)* checkbox.



To set a schedule for Sync times:

1. In the *System Tray*, right-click on the *FileCloud Sync icon*, and then select *Settings*.
2. On the *Settings* window, in the *Other Settings* section, click *Edit*.
3. Select the *Advanced* tab, in *Other Settings*, click *Edit Settings*.
4. To set which days you want to run Sync, select the appropriate checkboxes.
5. You can only set one time when Sync will run for every day you select. Use the *From*, and *To* fields to specify a time.
6. Click *Save Changes*.