

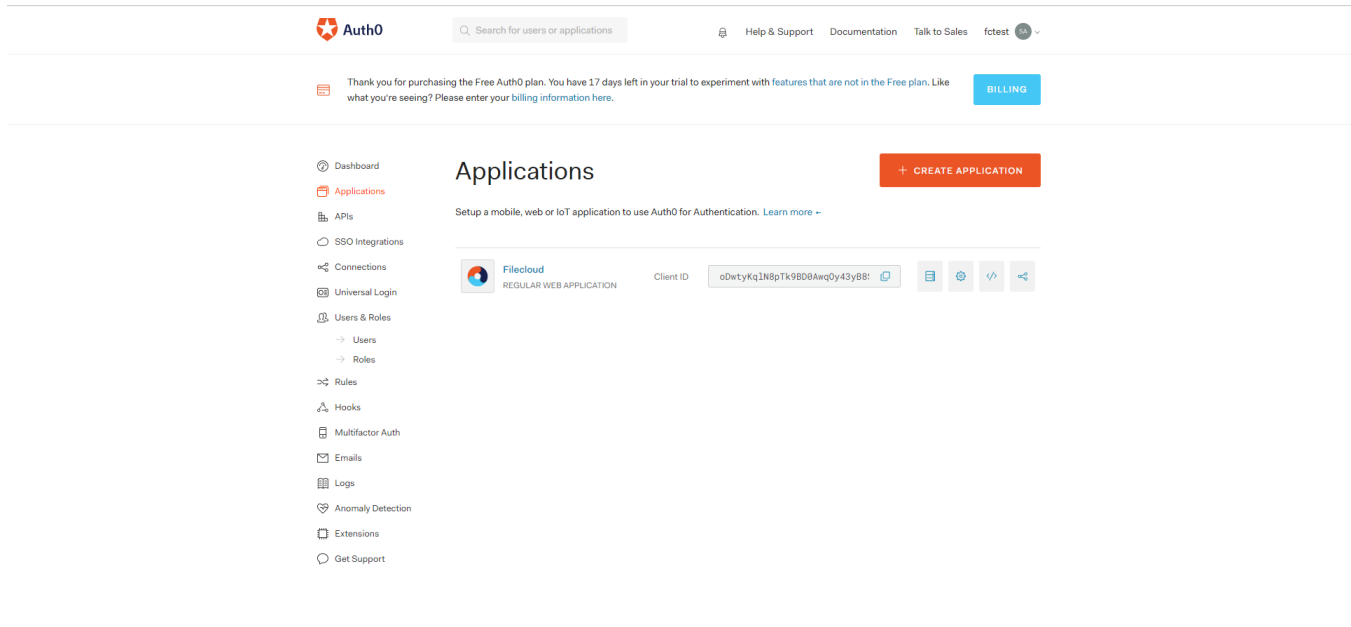
# Integrate Auth0 SSO with Filecloud

Before completing the following procedures, configure Apache Web Server. See [SSO Configuration Steps, Step 1](#) on the page [SAML Single Sign-On Support](#) for configuration instructions.

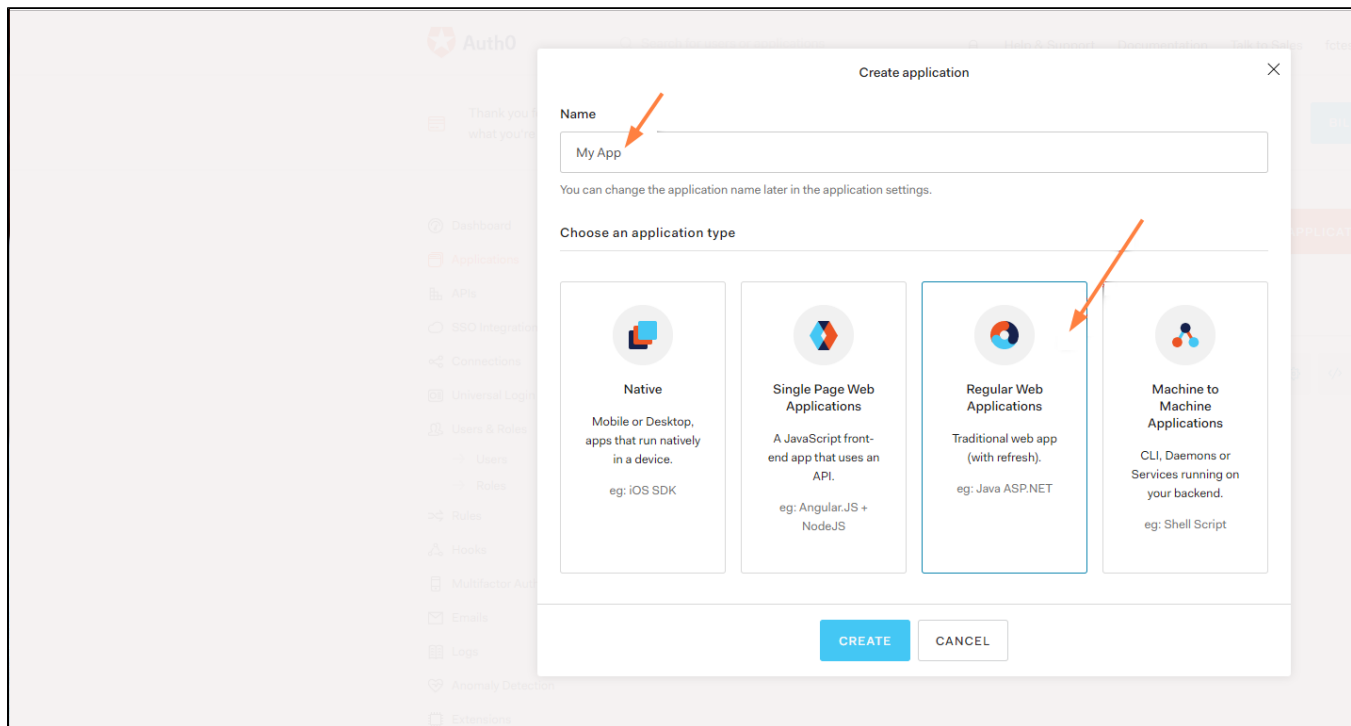
You can integrate Auth0 SSO with Filecloud using the SAML 2 protocol. Below are the steps to achieve this.

## Configuration in Auth0 portal

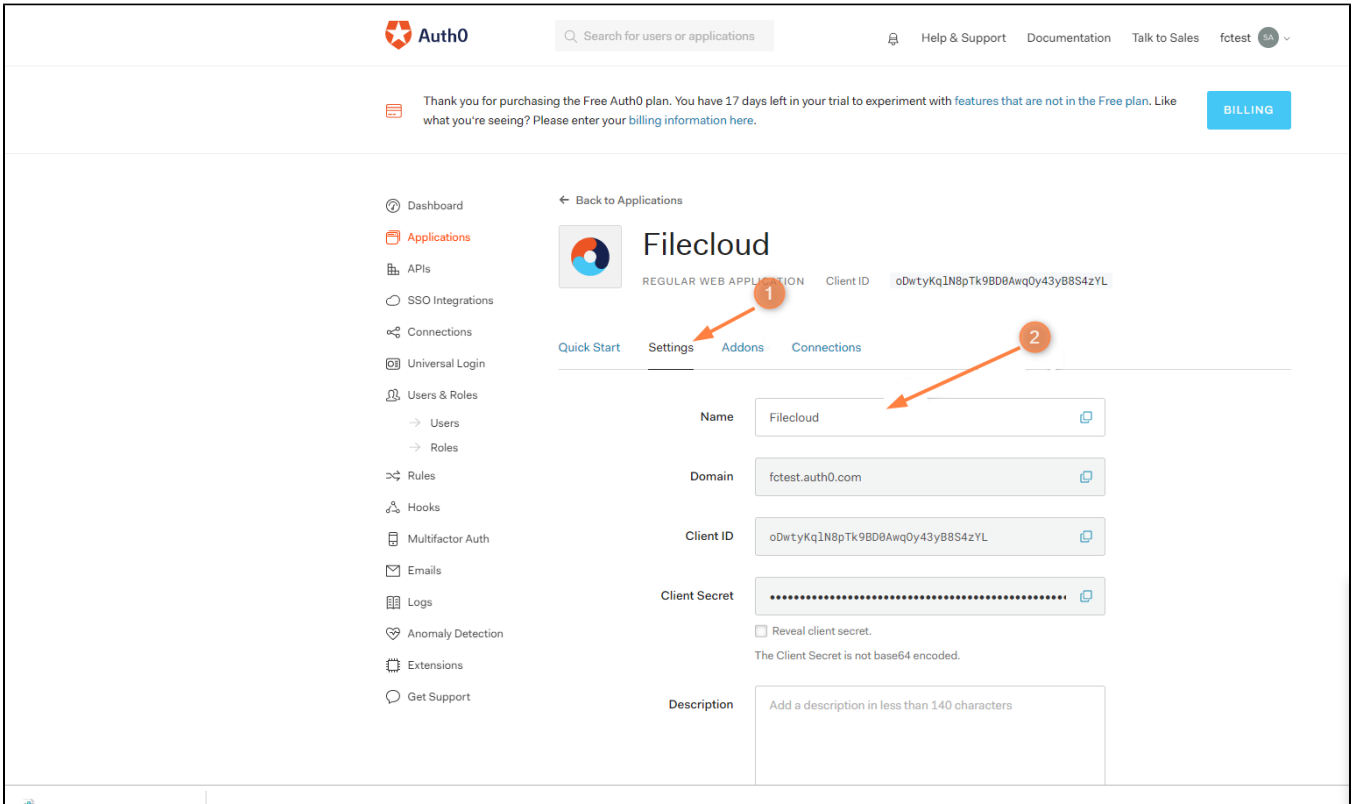
- Login to the Auth0 Dashboard and Click on the tab " Application " on the Left panel.
- Create application



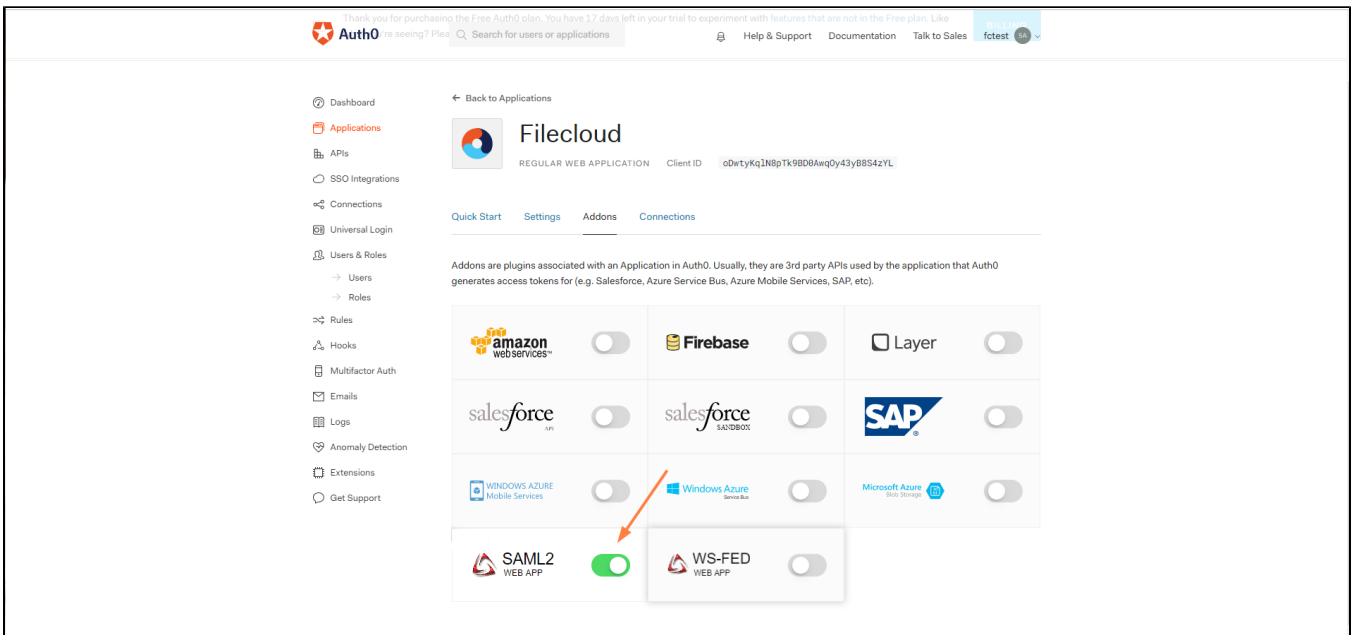
- Give the Application name as you wish and select Regular Web applications.



- Click on the created application again and go to the settings tab and confirm the application name in the " Name " field and Go to Addons



- Click on SAML2 ( Web App )



- Enter the URL in the Field "Application Callback URL". [https://your\\_filecloud\\_url/simplesaml/module.php/saml/sp/saml2-acis.php/default-sp](https://your_filecloud_url/simplesaml/module.php/saml/sp/saml2-acis.php/default-sp)

Addon: SAML2 Web App

Settings Usage

Application Callback URL

type/paste your FileCloud url here

https://[redacted]/simplesaml/module.php/saml/sp/saml2-acis.php/default-sp

SAML Token will be POSTed to this URL.

Settings

```
27 //  
    "http://schemas.xmlsoap.org/ws/2005/05/identity/claims/emailaddress",  
28 //  
    "http://schemas.xmlsoap.org/ws/2005/05/identity/claims/name",  
29 // ],  
30 // "authnContextClassRef":  
    "urn:oasis:names:tc:SAML:2.0:ac:classes:unspecified",  
31 // "logout": {  
32 //   "callback": "http://foo/logout",  
33 //   "slo_enabled": true
```

DEBUG

SAML Protocol Settings

- **audience ( string )**: The audience of the SAML Assertion. Default will be the Issuer on SAMLRequest .
- **recipient ( string )**: The recipient of the SAML Assertion (SubjectConfirmationData). Default is AssertionConsumerUrl on SAMLRequest or Callback URL if no SAMLRequest was sent.

- Scroll down and click on "Enable"

- Go to "Usage " on the same page.

Addon: SAML2 Web App ✕

[Settings](#)   [Usage](#)

---

### SAML Protocol Configuration Parameters

- **SAML Version:** 2.0
- **Issuer:**  

urn:fctest.auth0.com

IDP endpoint URL
- **Identity Provider Certificate:** [Download Auth0 certificate](#)
- **Identity Provider SHA1 fingerprint:**  

F2:62:74:37:F9:48:63:01:A6:09:76:03:2E:9D:8B:F5:C0:84:45:23
- **Identity Provider Login URL:**  

<https://fctest.auth0.com/samlp/oDwtyKqIN8pTk9BD0AwqOy43yB8S4zYL>
- **Identity Provider Metadata:** [Download](#) Download this metadata

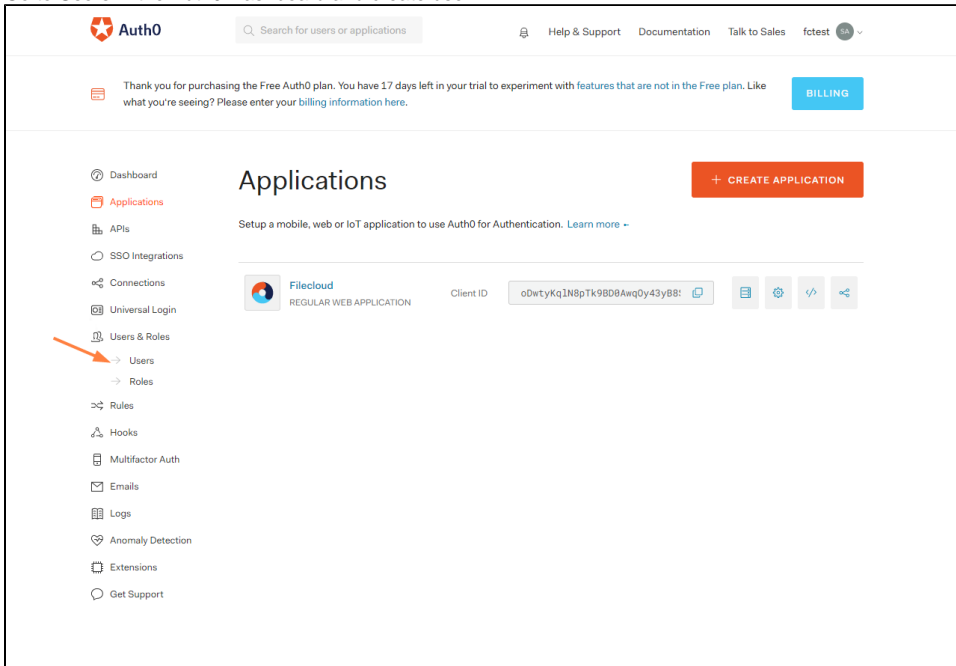
Alternatively, you can add a connection parameter:

```
https://fctest.auth0.com/samlp/oDwtyKqIN8pTk9BD0AwqOy43yB8S4zYL?connection=User
name-Password-Authentication
https://fctest.auth0.com/samlp/oDwtyKqIN8pTk9BD0AwqOy43yB8S4zYL?connection=goog
le-oauth2
```

In this case, Auth0 will redirect users to the specified `connection` and will not display the Login Widget. Make sure you send the SAMLRequest using `HTTP POST` .

- Note down the value in the field **Issuer**.
- Scroll down and download the metadata from **Identity Provider Metadata**:

- Go to Users in the Auth0 Dashboard and create user.



## Configuration in Filecloud Admin portal

- Go to Admin portal Settings SSO
- Enter the below details in the required fields

IdP End Point URL: Paste here the value we note down from **Issuer**: ( 10th step in Auth0 configuration part )

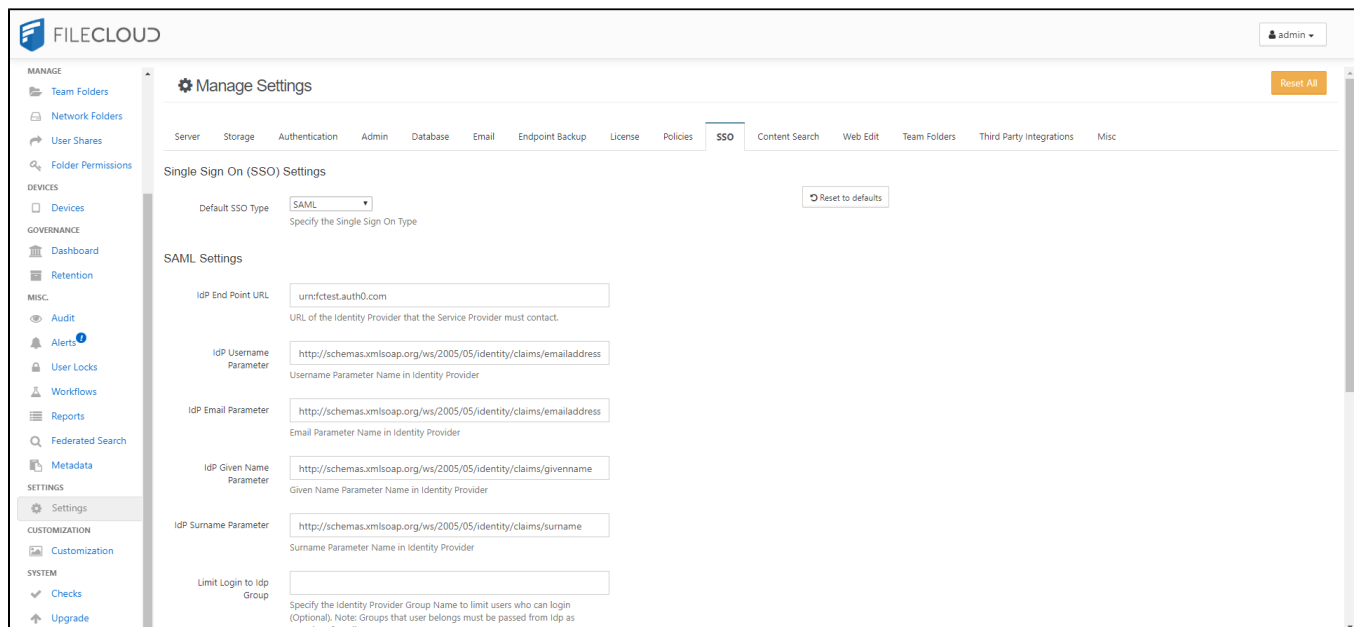
IdP Username Parameter : <http://schemas.xmlsoap.org/ws/2005/05/identity/claims/emailaddress>

IdP Email Parameter: <http://schemas.xmlsoap.org/ws/2005/05/identity/claims/emailaddress>

IdP Given Name Parameter: <http://schemas.xmlsoap.org/ws/2005/05/identity/claims/givenname>

IdP Surname Parameter: <http://schemas.xmlsoap.org/ws/2005/05/identity/claims/surname>

IdP Meta Data: open the metadata file we have downloaded using notepad and copy paste value here.



The screenshot shows the FileCloud administration interface with the 'Settings' menu open. The 'IDP Surname Parameter' is set to 'http://schemas.xmlsoap.org/ws/2005/05/identity/claims/surname'. The 'Limit Login to Idp Group' is empty. The 'Show the Idp Login Screen' checkbox is unchecked. The 'IDP Meta Data' field contains XML metadata for an Identity Provider. The 'Enable ADFS' dropdown is set to 'NO'. The 'User Login Token Expiration Match IdP Token Expiration' checkbox is unchecked. The 'Log Level' is set to 'DEV'.

- Click save
- Go to **Customization > General > Login** and check **Show SSO Link** and **Show Login Options**.

The screenshot shows the FileCloud administration interface with the 'Customization > General > Login' settings page. The 'Show New Account Button' checkbox is checked. The 'Show SSO Link' checkbox is checked, with an orange arrow pointing to it. The 'Show Login Options' checkbox is checked, with an orange arrow pointing to it. The 'Login Panel Transparency' radio button is set to 'YES'. The 'Login UI Additional Links' field contains the text: '[Privacy Policy](https://www.yoursite.com/privacy)' and '[Terms of use](https://www.yoursite.com/tos)'.

- 860px In the Filecloud User login page Click on more option and access the SSO. This will first redirect you to Auth0 login page and you can authenticate as the user that you have created in the Auth0.

If that user doesn't exist in the Filecloud, it will be created automatically after the successful authentication.



Login

[+ New Account](#)

Account

Password



[> Forgot Password](#)

[Login](#)

Or use your SSO

[Log In with SSO](#)



English [v](#)

[Privacy Policy](#)

[Terms of use](#)

Powered by FileCloud